



Need for donations increasing

The need for donations now is critical. Our Food Pantry served over 4,000 individuals in Elkhart County during the month of July.

We leverage every donation. For example, a \$100 donation gives us the leverage to purchase \$600 worth of food for the pantry!

If you would like to make a donation, visit our website at churchcommunityservices.org and click on the Donate button, or use the envelope enclosed.

New plan for processing food pantry guests

Our food pantry is looking to meet the increased need. Beginning in September, the pantry will implement a new plan for processing guests, which will offer guests a greater selection of food items while shopping in the pantry.

The pantry will allow five people in at a time, and each person will be given a number. When a guest's number is called, it will be their turn to shop in the pantry. The numbers and order will also be displayed outside, so guests know when their turn is coming up. The pantry is also adding a pantry guest processor, which will reduce waiting time.

Clients will have more of a choice of bread and personal care, as well as access to more refrigerated and frozen items. There will also be a greater assortment of prepackaged boxes of produce, as well as options for picking out specific produce.



Newest Soup of Success Graduates

We celebrated four incredibly amazing women at the Soup of Success graduation August 25. What a blessing it was to hear from them and their friends and families. We are so proud of Angela, Tytannia, Teresa, and Trenee!

We are also now accepting applications for our next Soup of Success class! Those interested can call 574.523.1551 or email betsya@churchcommunityservices.org for more information on how to sign up to participate.



Funds available to help Elkhart city residents for COVID related hardship

Church Community Services can provide rent, mortgage and utility assistance to residents of the City of Elkhart who have been financially impacted by COVID-19 because of things like a decrease in work hours, increased childcare responsibilities due to school or daycare closures, COVID-19 illness or required quarantine of the applicant or household member, etc.

Funds are available on a limited basis. It can take up to 2 weeks after the application and all required documents are submitted before a decision is made. See below for more details about income eligibility. Please call 574-295-3673 ext. 128 or ext. 101 with questions.

2022

Income Eligibility Guidelines (CDBG)

Household size	Household income at or below	
	(Monthly)	(Annually)
1	\$3,525	\$42,300
2	\$4,029	\$48,350
3	\$4,500	\$54,400
4	\$4,533	\$60,400
5	\$5,437	\$65,250
6	\$5,842	\$70,100



New Faces at Church Community Services

In the past few months, we have been fortunate to have several new faces join our staff. Please help us welcome:



Keith Sarber, Executive Director



Frank Lucchese, Development Director



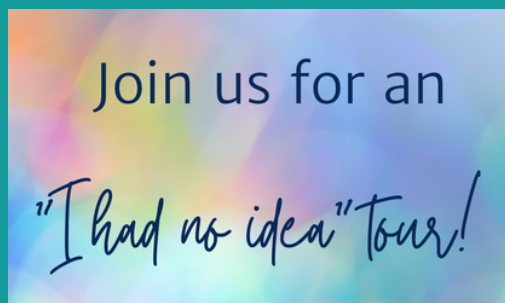
Steve Noble, Facilities Manager



Katie Smith, Receptionist



Michael Ivey, Communications Director



We often hear “I had no idea Church Community Services did this!” after giving a presentation or taking someone on a tour. We want to make this eye-opening opportunity available to all. Every month on the 1st Thursday at 10:30 am (English) and 3rd Thursday at 5:30 pm (Spanish), we will be giving tours to everyone interested in learning about the amazing work being done on our campus, and you will receive a bag of one of our famous Soup of Success soups to sample at home! To register, visit: www.churchcommunityservices.org/i-had-no-idea



We are grateful to River Oaks for donating \$2,500 to our pantry! As a result of the gift, we were able to purchase a new pallet jack and make an investment in food production packaging equipment!



Seed to Feed received a total of 15 large animals (2 sheep, 7 goats, 5 swine and 1 beef) donated from the 4-H Fair Auction!



Watch for a spooky invite coming soon!



Seed to Feed is so proud of our summer Teen Growers! This season they have fundraised for the program at the Elkhart Farmers Market, grown and maintained all our on-site garden spaces, and will present their final projects at our Teen Growers Showcase on September 3rd! Thank you to all donors, community members, and mentors who have helped make this program possible.



We are very grateful to Concord High School for conducting a food drive which garnered 2,317 pounds of food! Thank you Concord!!



You can help Church Community Services while shopping on Amazon! AmazonSmile is a program that donates 0.5% of your eligible purchases on Amazon to a charity of your choice, including CCS!! All you need to do is start shopping at smile.amazon.com

Discover Soup of Success!

A women's job and life skills training program

Join us every Friday at 11 am

*Take a tour - Hear from a current participant
Ask questions - Fill out an application*

www.soupofofsuccess.com
soupofofsuccess@churchcommunityservices.org
574-523-1551

We look forward to meeting you!

Summer fun was served up at the Summer Basil Bash fundraiser for Seed to Feed at Sports Time Family Pub and Grill on July 28. 15% of all sales went towards our Seed to Feed program!

A total of \$2,000 dollars was raised for Seed to Feed! Thank you to Sports Time and all who attended!!



Follow Church Community Services
and our Soup of Success program!



Food Pantry Needs

Canned soups, meat and vegetables

Cereals (hot and cold)

Crackers

Rice

Hamburger Helper-like meal helpers

Peanut butter

Jelly

Condiments

Boxed potatoes

Cash donations allow the pantry to purchase items at an unbeatable price of 18 cents a pound.

Diapers

Personal care and hygiene items

Volunteers Needed!

We need volunteers for the following:

- Seed to Feed needs volunteers to help harvest, wash and pack greens from our greenhouse on Monday mornings for food pantry visitors.
- Seed to Feed is looking for someone to come in weekly to help organize and input seed donations.
- Seed to Feed needs individuals or groups to help wash and organize donated garden pots in the greenhouse.
- Sorting and repackaging food and cleaning/organizing for our food pantry.
- Delivering food to homebound individuals. Volunteers are needed the third Wednesday of each month to deliver food in their own car to approximately 6 people.
- Assisting the Food Services Director as we serve our guests Mondays, Wednesdays and Thursdays.
- Spanish speaking bi-lingual interpreter for the food pantry.
- Drivers for our box trucks (26 and 16-foot trucks) and vans for food pick-up. CDL required for 26-foot truck, but not necessary for other vehicles.
- Groups to make Soup of Success Soups. Adopt one Thursday evening a month, 6-7:30 pm. Bring a group of 4-8 people to assemble bags of soup.

If you are interested, visit www.churchcommunityservices.org/vol or email volunteer@churchcommunityservices.org

Financial Services Hours

Monday and Thursday: 9am-12pm & 1pm-4pm

Wednesday: 9am-12pm



Food Pantry Hours

Monday 11am-3pm

Wednesday 11am-3pm

Thursday 11am-3pm & 4-7pm



Food Pantry